



Ball Transfer Unit A800-22-16

Ball Units Series A8 - Wheel S-800


 -30 °C - +70 °C


swivels easily


wear resistant


shock proof

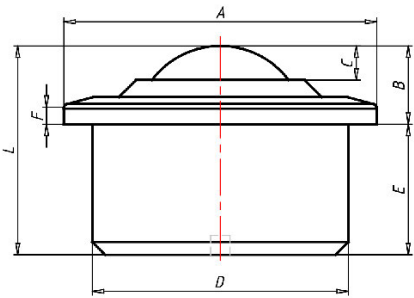
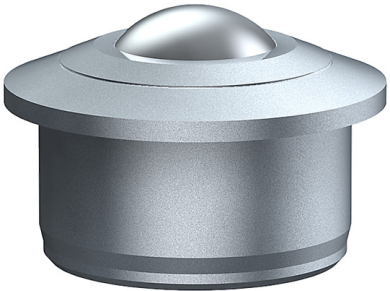

floor protective


weather proof

Wheel

Ball: zinc-plated or stainless steel

Housing, zinc-plated or stainless steel



Ball Transfer Unit

Series: 800

Ball-Ø mm: 22

Finish housing: steel zinc plated

Finish Balls: stainless steel

Load Capacity kg: 180

Load capacity tested according to EN 12530 and EN 12527

A mm: 45

B mm: 9,8

C mm: 4

D mm: 36

E mm: 20,7

F mm: 3

L mm: 30,5

Advantages

- ✓ Casing made of solid steel on the lathe
- ✓ High load capacity
- ✓ Low profile
- ✓ Holes to let out dirt

©Copyright 2024 Rollenbau GmbH, www.rollenbau.at 19.05.2024

Applications

- Haulage way
- Assembly lines